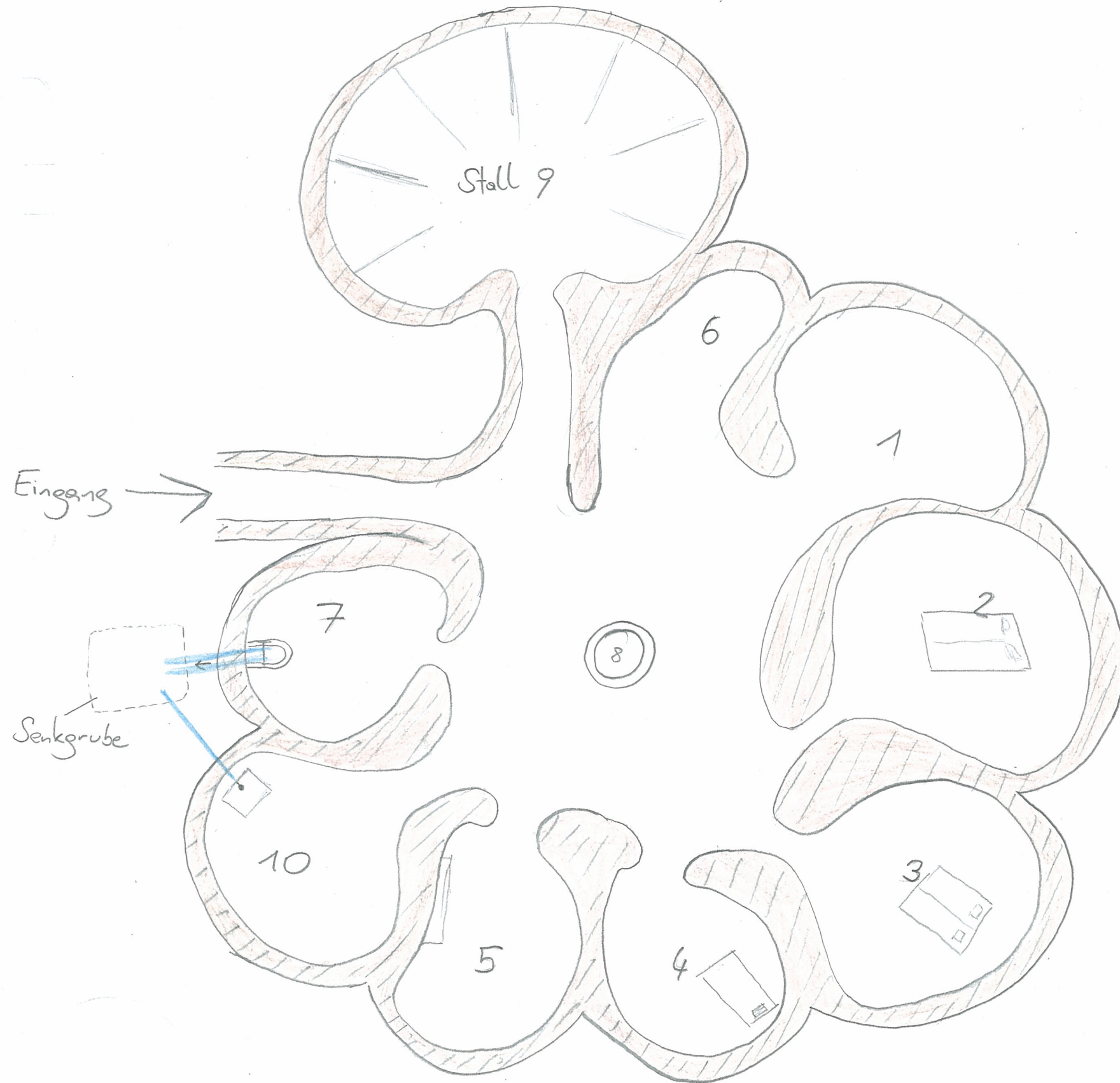
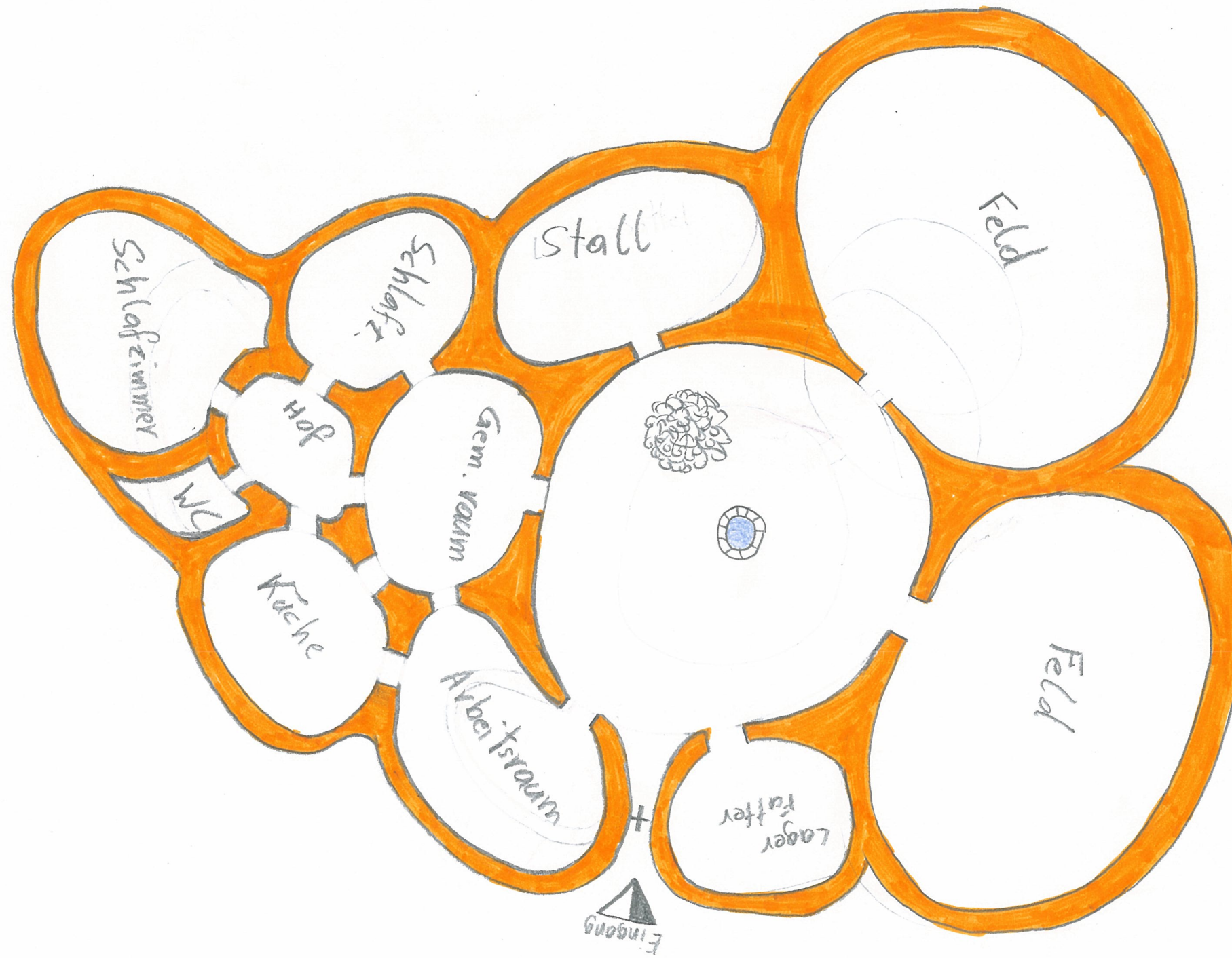
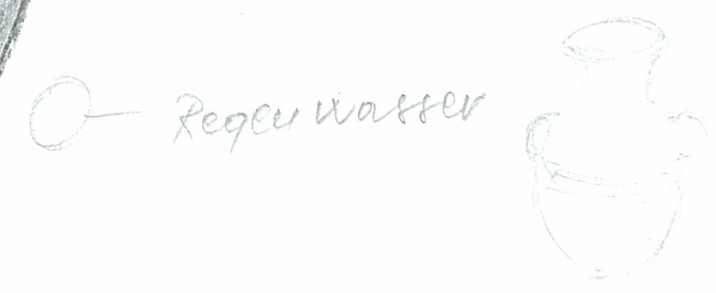
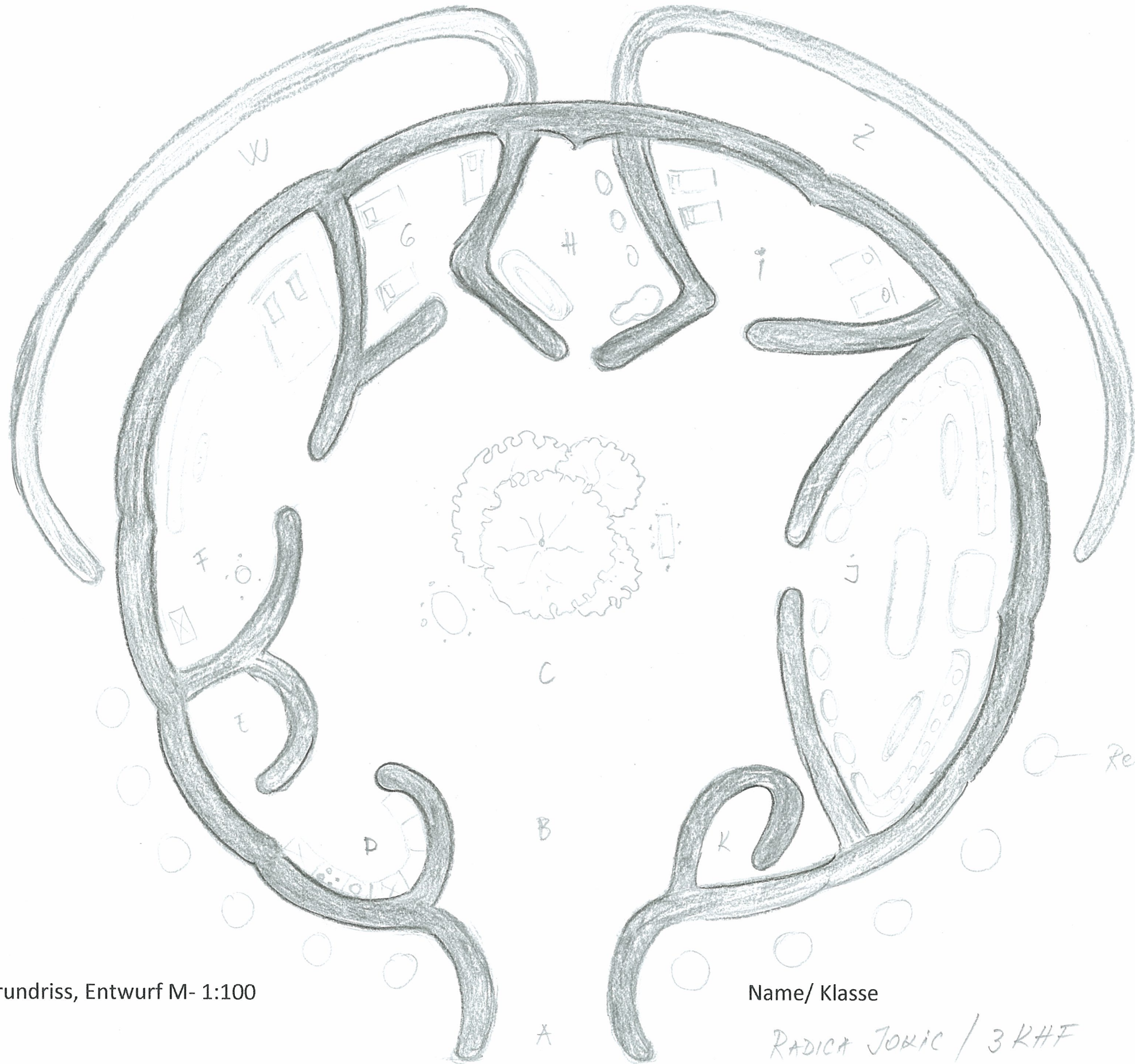


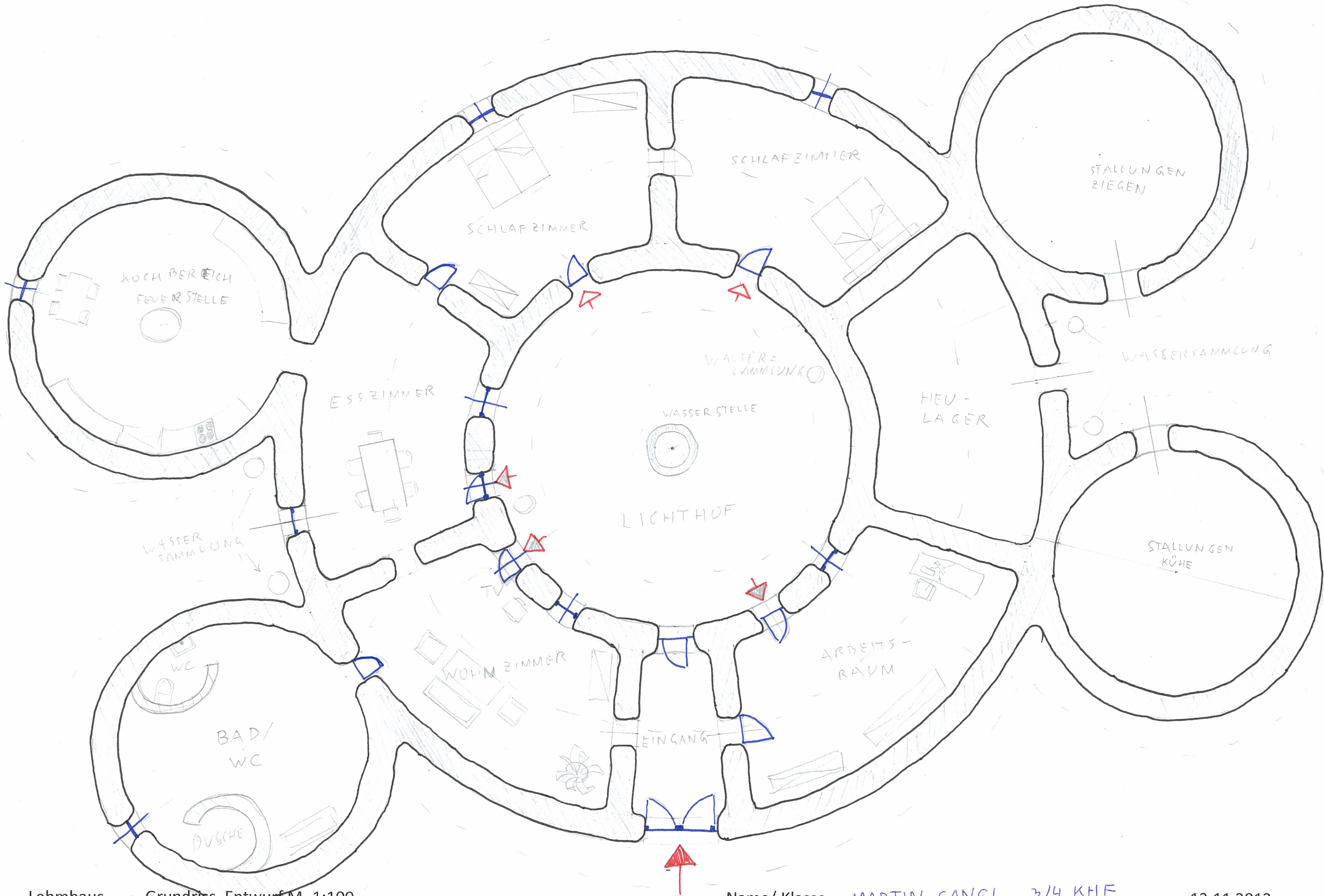
- Küche / Feuerstelle / Herd 8
- Wohnzimmer 1
- Schlafzimmer 2
- Kizimmer 3
- Arbeitszimmer 4
- Abstellraum 5
- Speicher 6
- Klo 7
- Stall 9
- Badezimmer 10



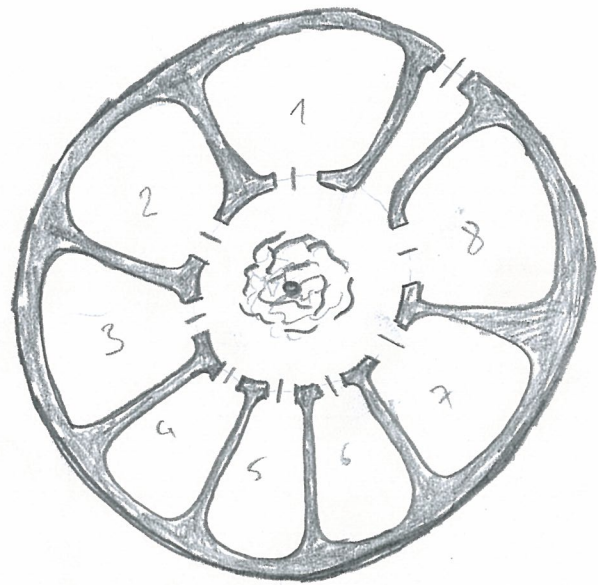


- A - HAUPT-EINGANG
- B - VORRAUM
- C - HOF (GARTEN)
- D - KÜCHE
- E - ABSTELLRAUM
- F - SCHLAFRAUM (ELTERN)
- G - SCHLAFRAUM (KINDER)
- H - BAD
- I - SCHLAFRAUM (KINDER)
- J - WOHNRaum
- K - WC
- W - KEINTIERE
- Z - GROSSTIERE



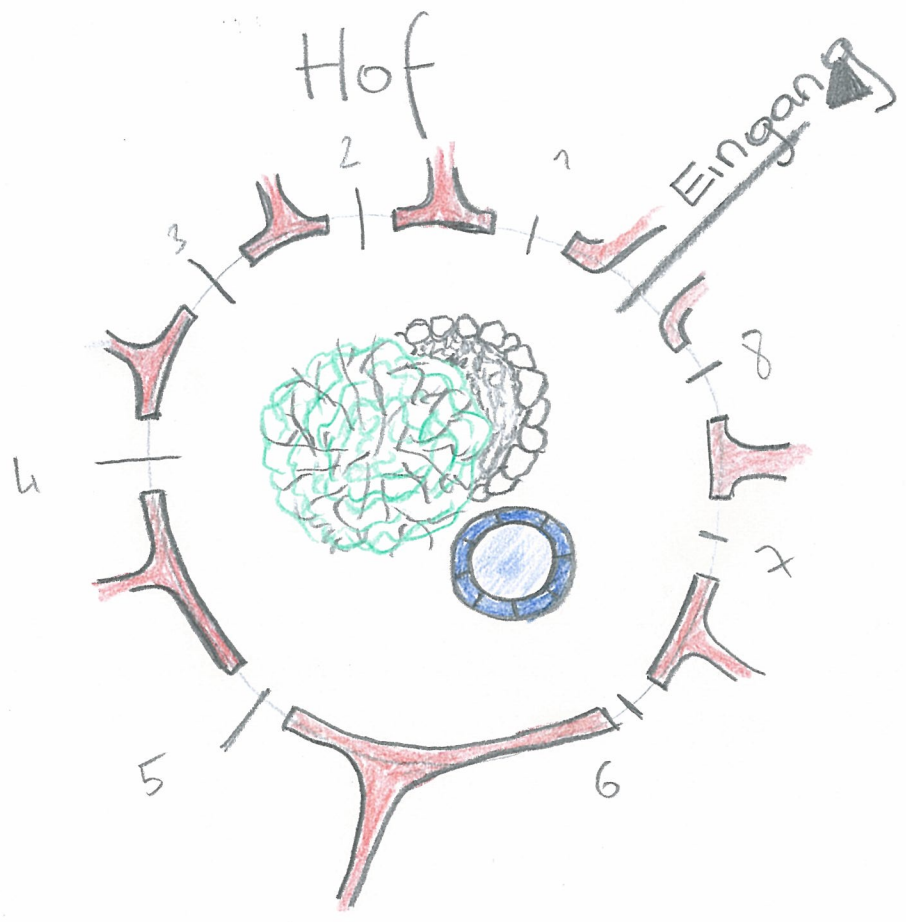
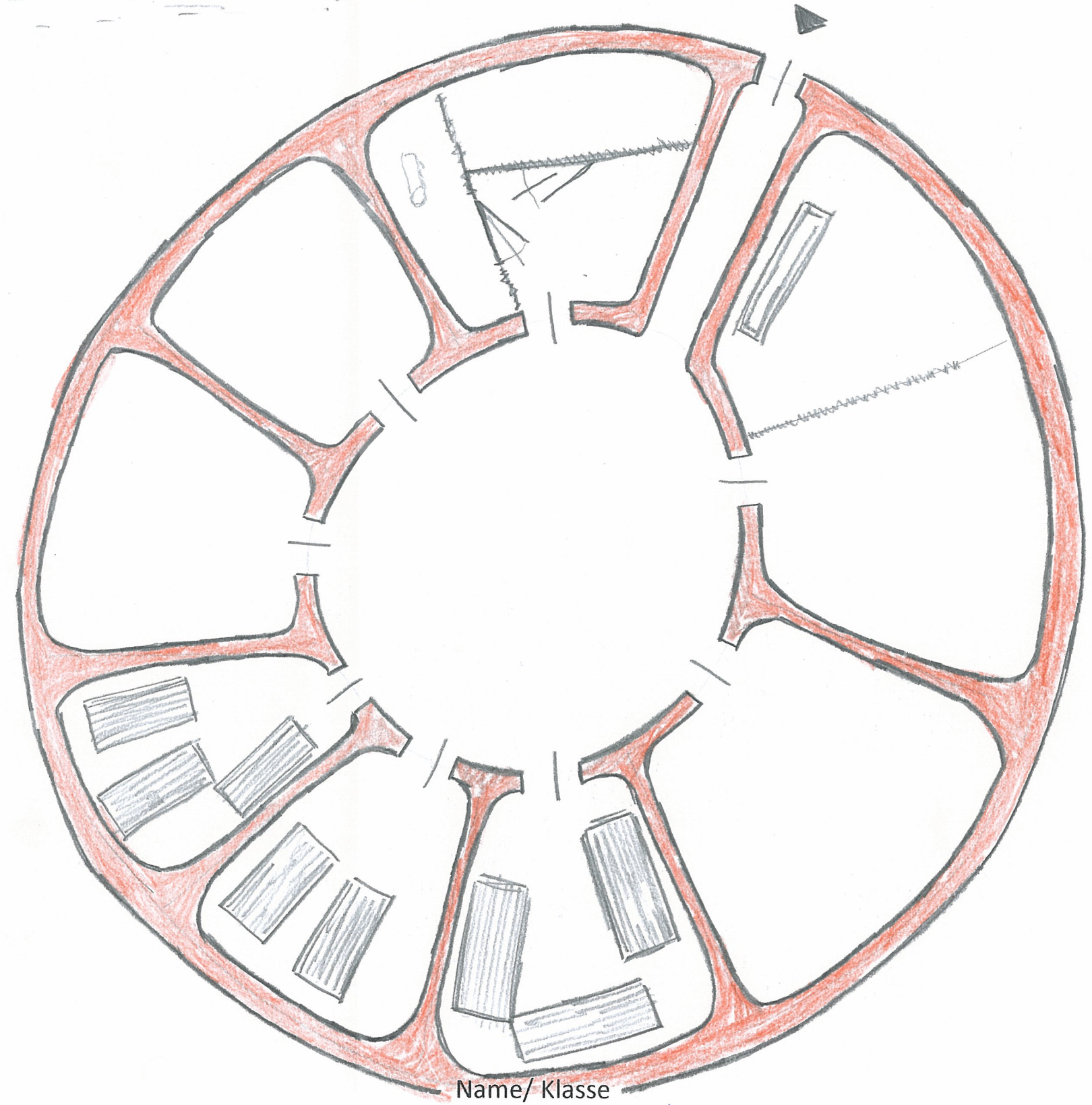






- 1 Tiere
- 2 Lager
- 3 Essen
- 4 Schlafen
- 5 Schlafen
- 6 Schlafen
- 7 Arbeit
- 8 Tiere

©  
Copyright

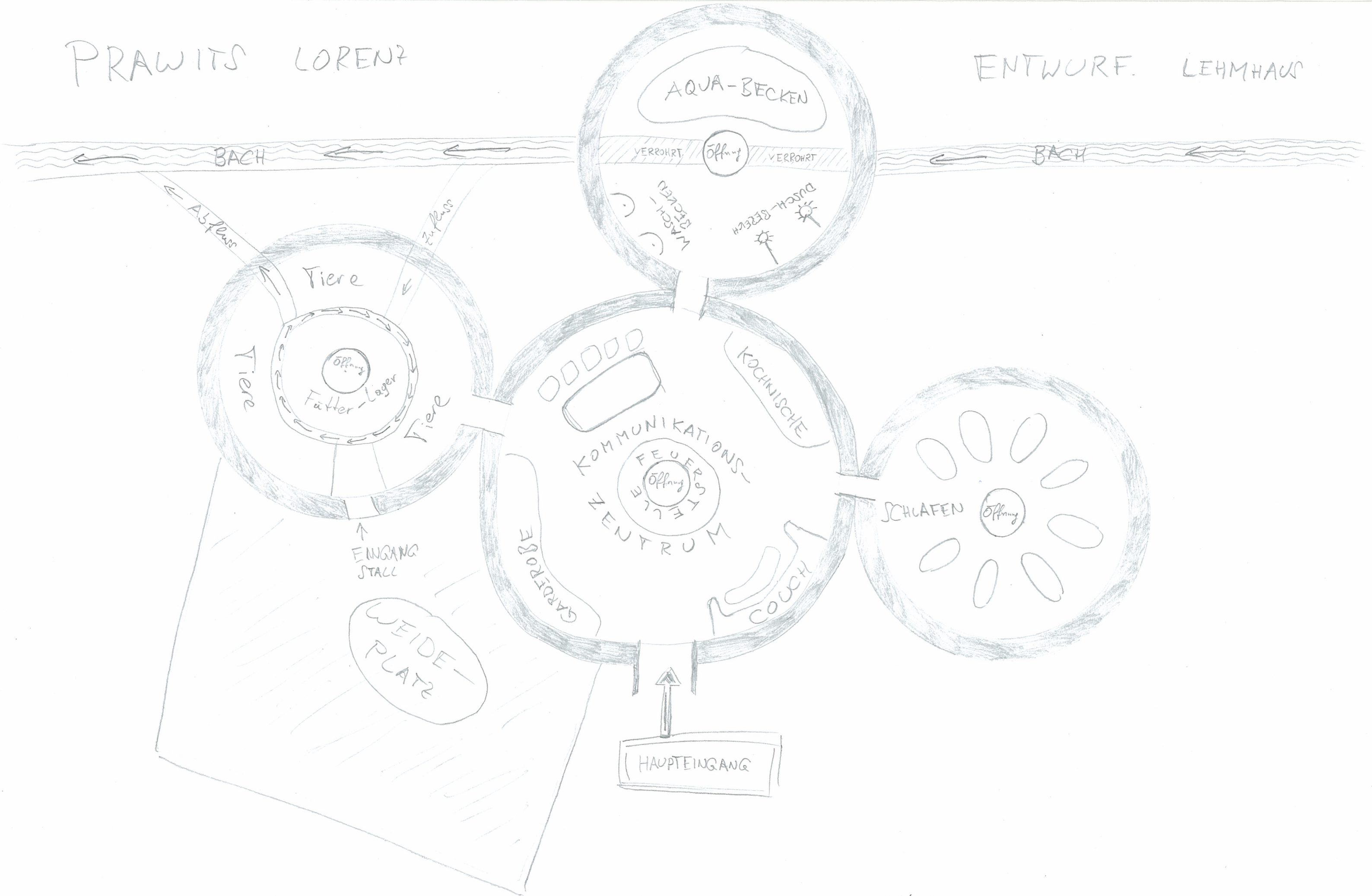






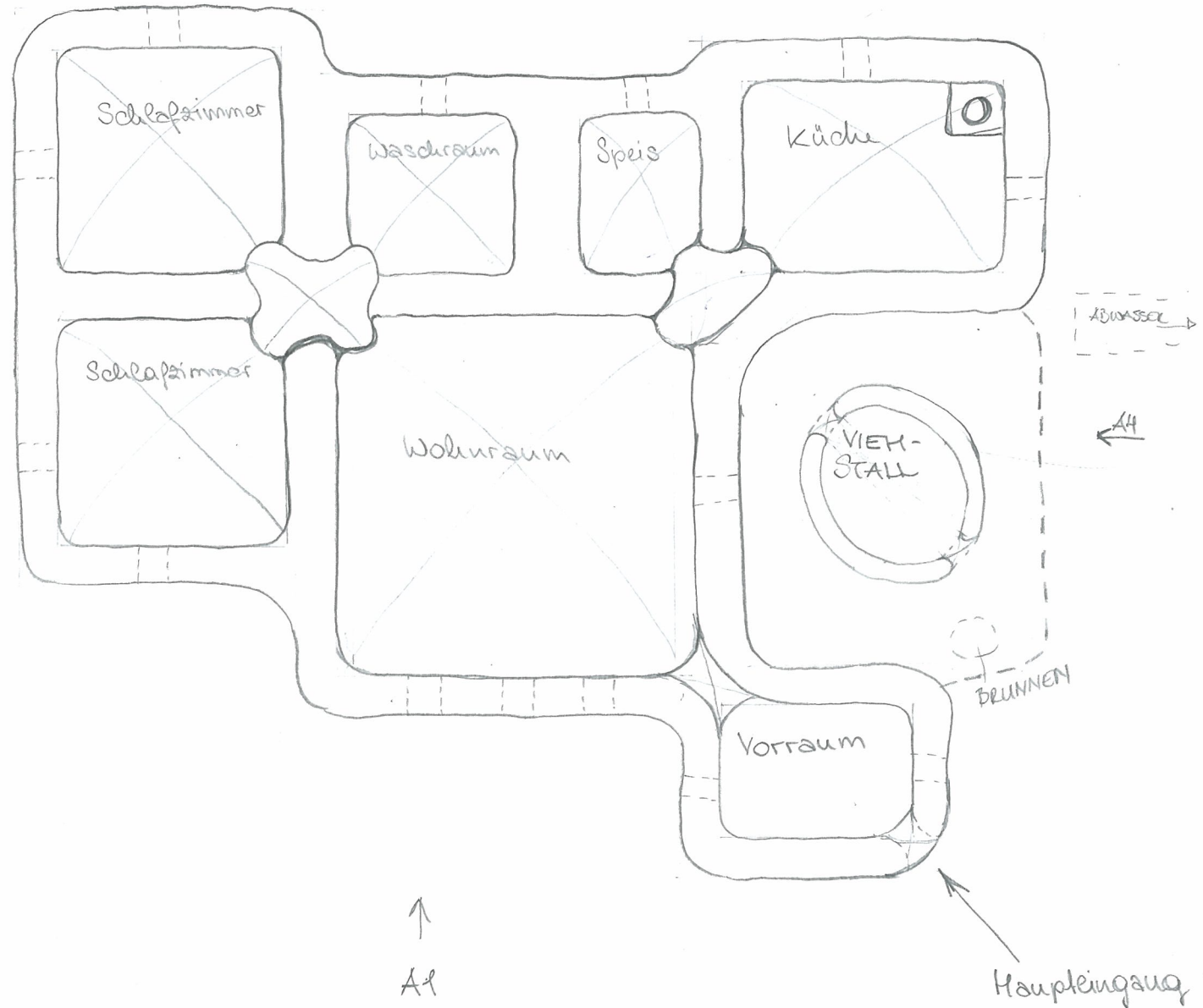
PRAWITS LORENZ

ENTWURF. LEHMHAUS

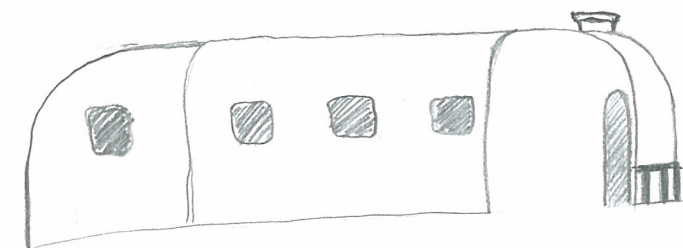


↓ A3

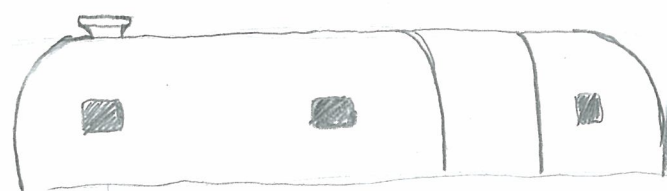
← A2



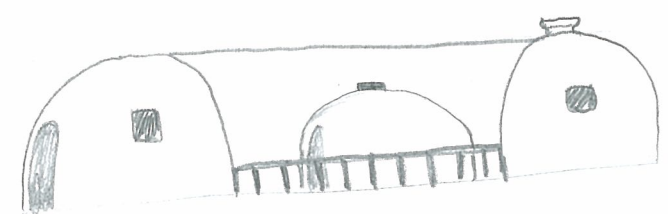
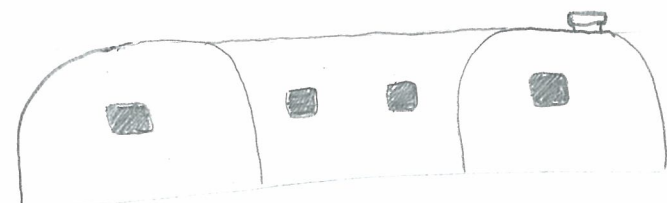
A1 - ANSICHT 1



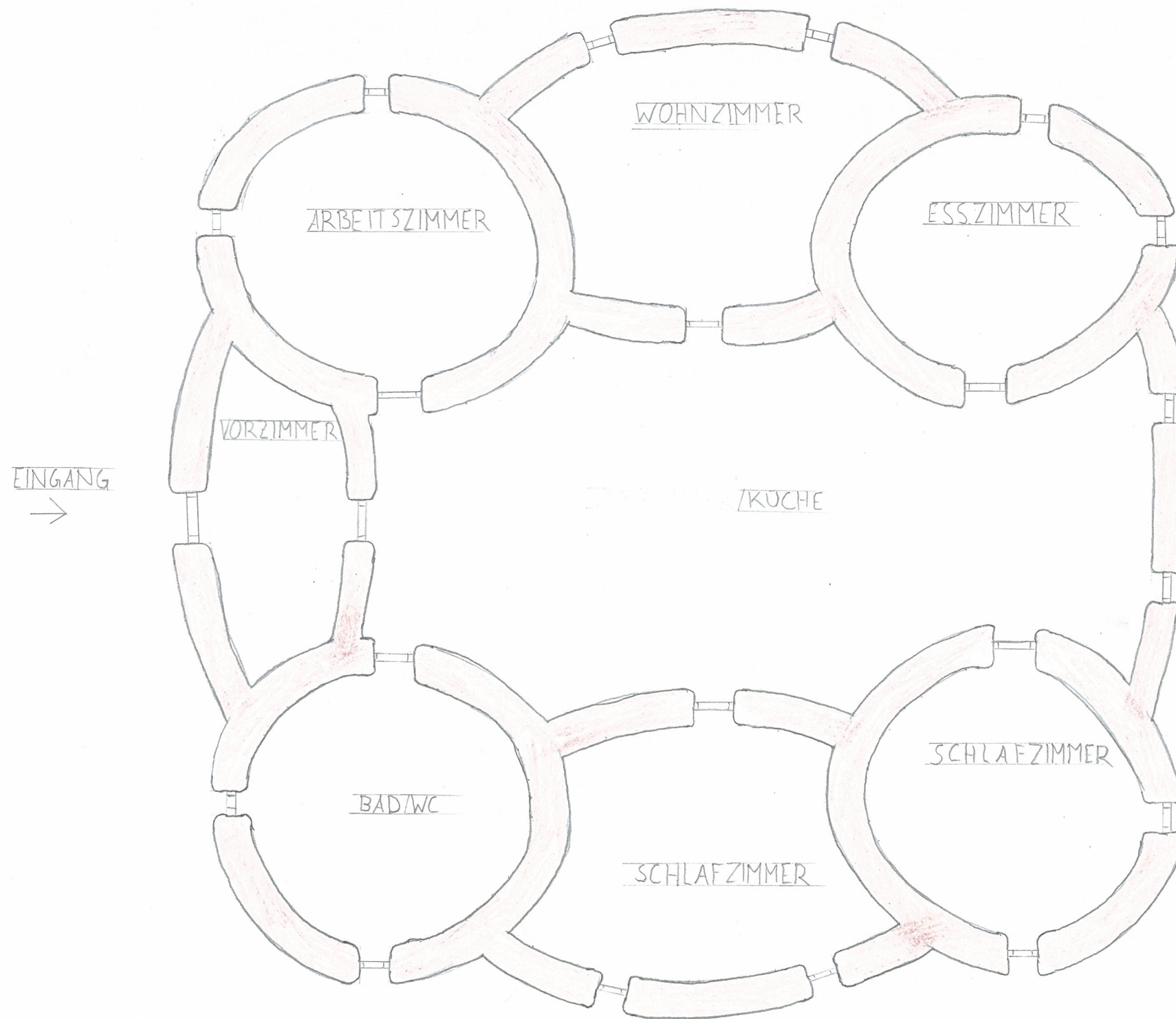
A2 - ANSICHT 2

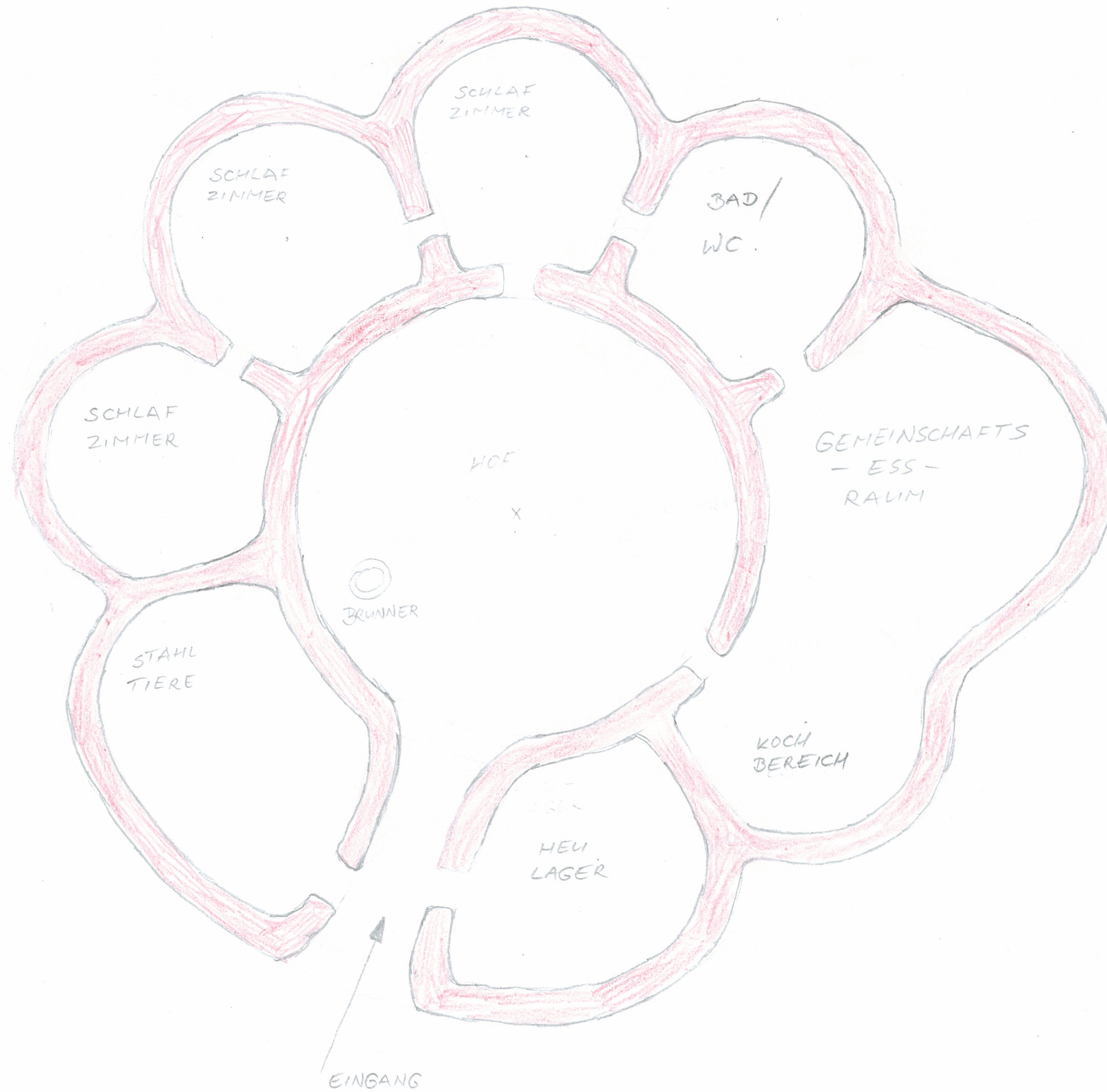


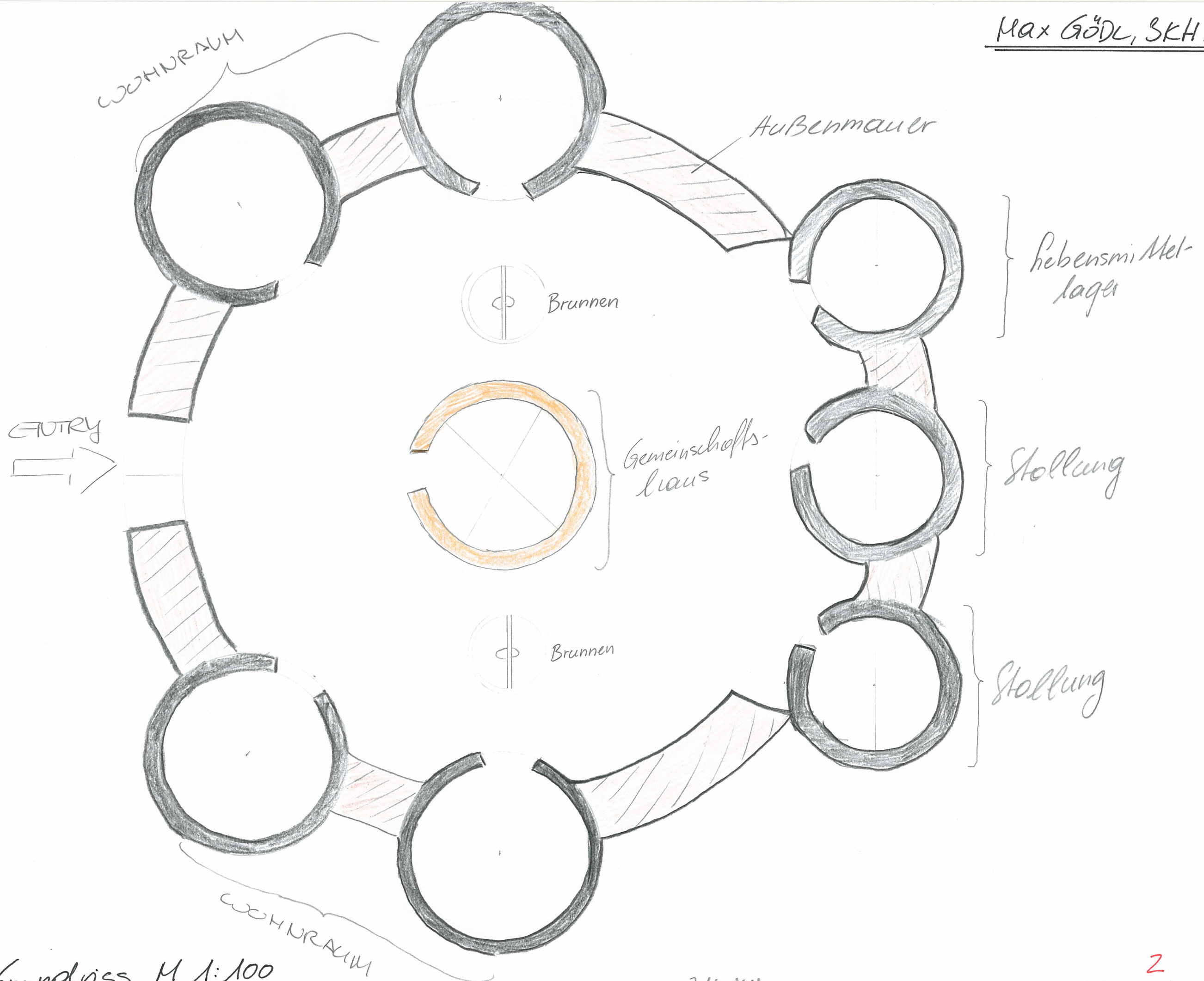
A3 - ANSICHT 3



HUBER ANDREA



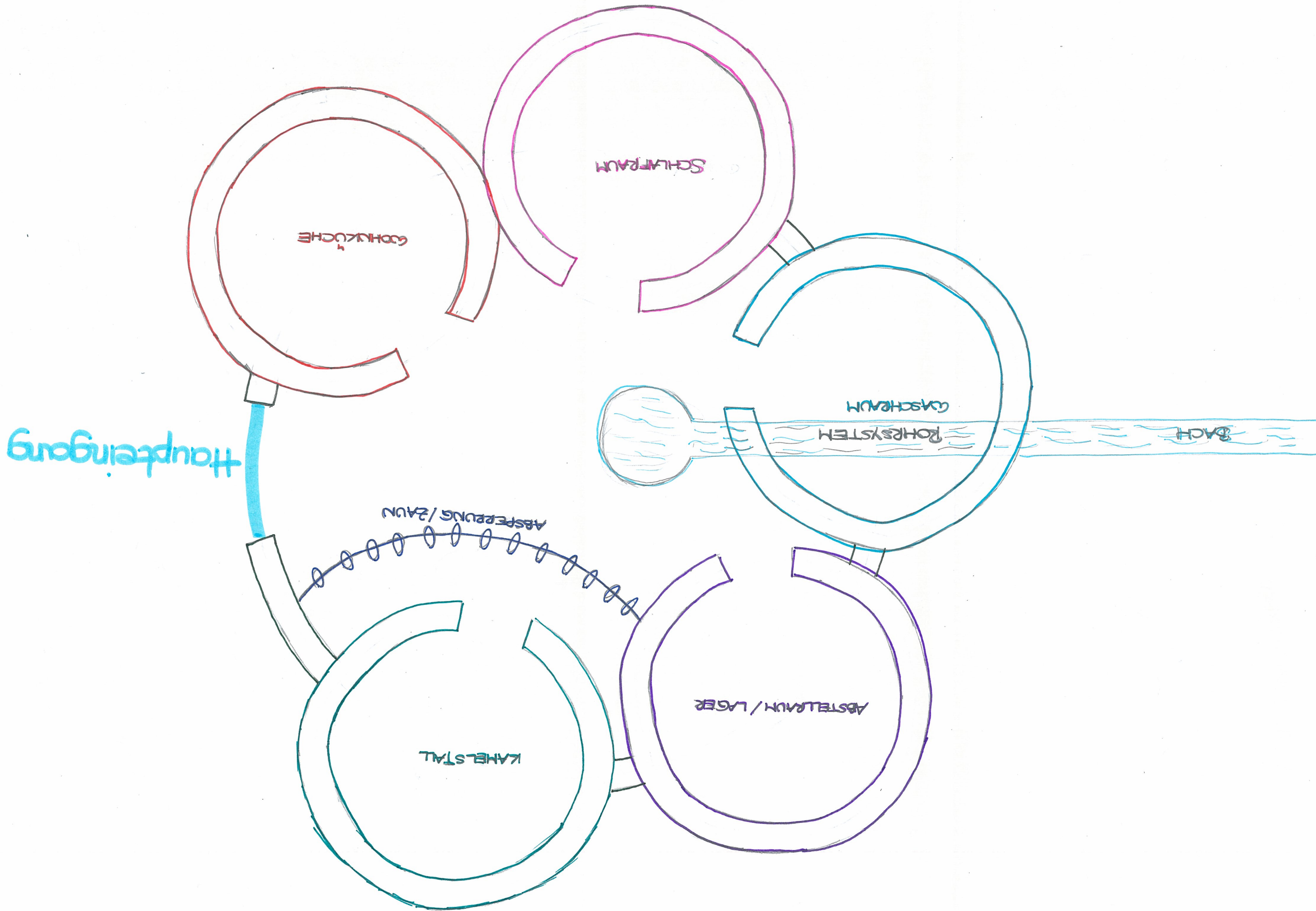




Reinhaus, Grundriss M 1:100

3/4 KH

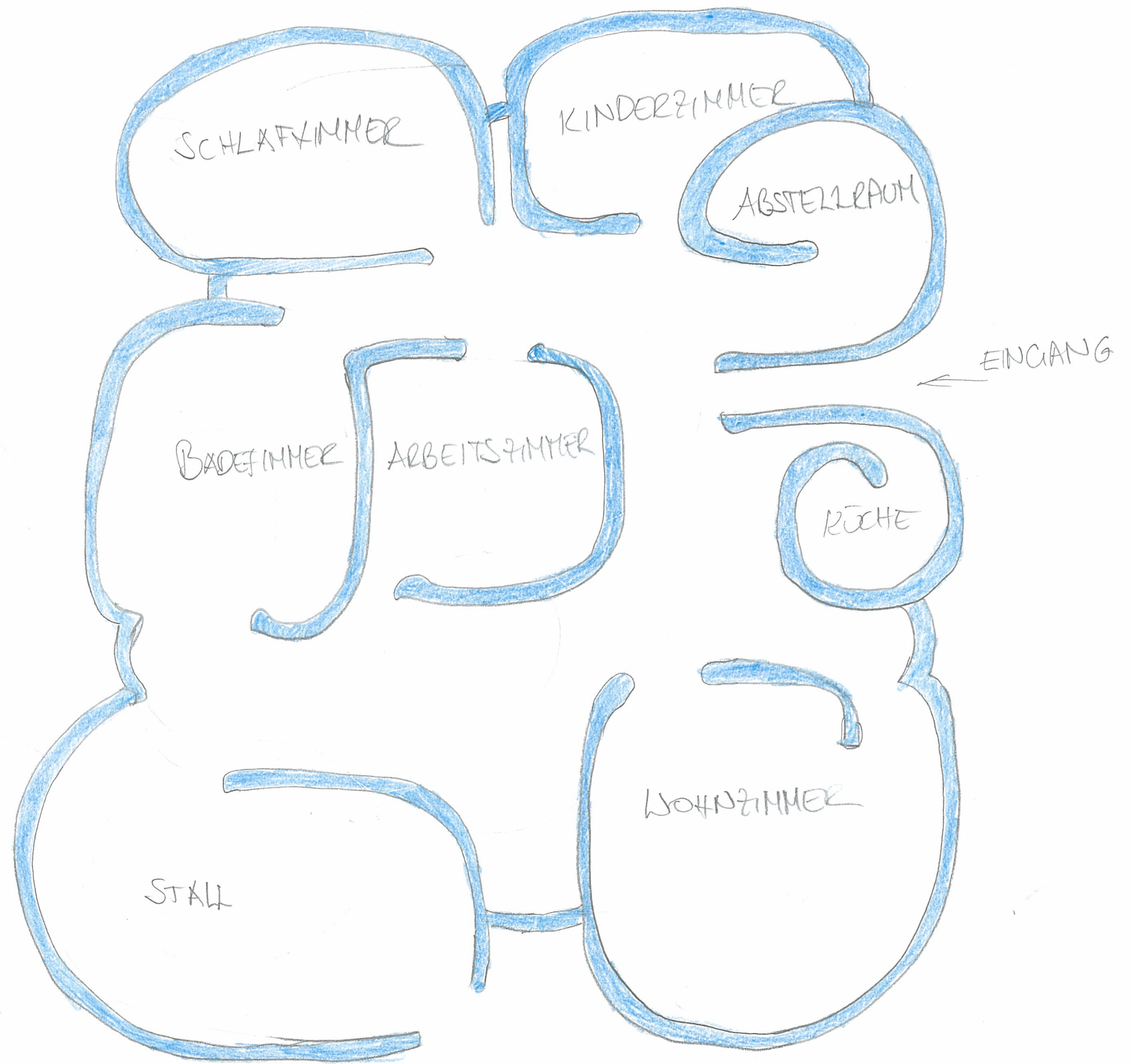
12.11.2012<sup>2</sup>

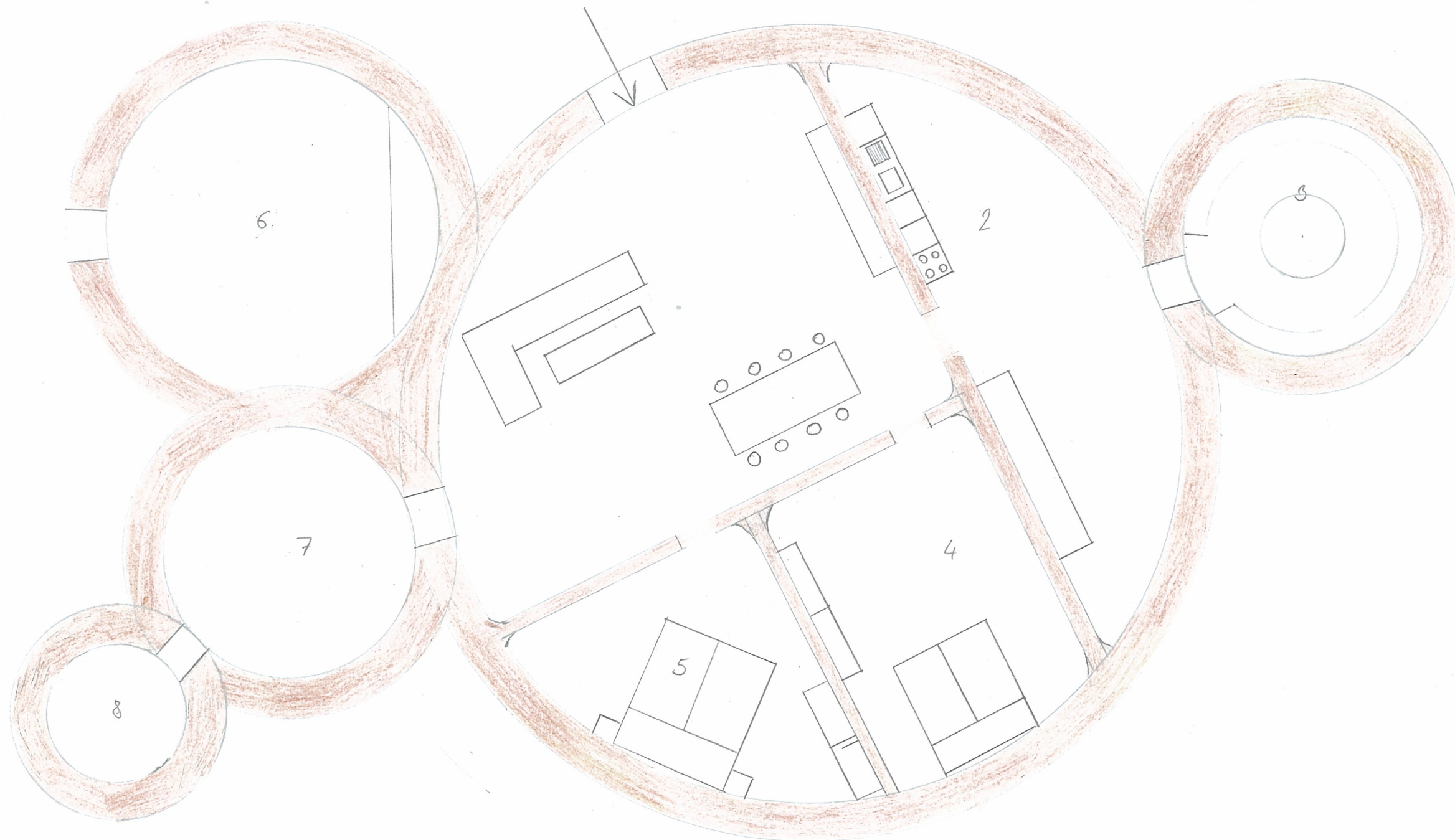


- 1 Eingang
- 2 Badezimmer
- 3 Wohnzimmer + Esszimmer
- 4 Küche
- 5 Bar
- 6 Freizeitraum
- 7 Schlafzimmer









- 1. Wohnzimmer
- 2. Küche
- 3. Lager/Lebensmittelsaum
- 4. Schlafzimmer 1
- 5. Schlafzimmer 2
- 6. Stall
- 7. Bad/WC
- 8. Wasserspeicher